

# XFC205R Miniature Load Cell



- Range from 0-2 to 0-200N  
[0-0.4 to 0-40 lbf]
- Compression
- High Stiffness
- Integrated Spherical Load Button
- Easy Installation with Threaded M5 Male Base
- For Static and Dynamic Applications
- Important Overload Capacity

## DESCRIPTION

The miniature size and lightweight of the **XFC205R** facilitates testing where these conditions are necessary. Unlike sensors with flat force application surfaces, the **XFC205R** incorporates a spherical load button resulting in more precise measurements. Its high stiffness, for the size and measurement ranges, allows measurements in dynamic applications. A strain relief spring strengthens the cable output. The sensing element is fitted with a fully temperature compensated Wheatstone bridge equipped with high stability micro-machined silicon strain gages. With a threaded M5 male base, the **XFC205R** is easily installed in industrial or OEM applications.

With many years of experience as a designer and manufacturer of sensors, Measurement Specialties, Inc. often works with customers to design or customize sensors for specific uses and testing environments.

To meet your needs we also offer complete turnkey systems. The matched components (sensor, power, amplifier and digital display) are formatted, calibrated and ready for immediate use.

## FEATURES

- Easy Installation with Threaded M5 Male Base
- Other thread and design on request
- Integrated Spherical Load Button
- High stability
- Higher IP rating on request

## APPLICATIONS

- Process control equipment
- Press-fit machinery
- Robotics and effectors
- Laboratory
- Fibre Optical component assembly

## STANDARD RANGES

F.S. Ranges in N	2 - 5	10 - 20 - 50	100 - 200
F.S. Ranges in lbf	0.4 - 1	2 - 4 - 10	20 - 40
Stiffness in N/m	$3.7 \times 10^5$ to $1.4 \times 10^6$	$6.1 \times 10^6$ to $6.6 \times 10^7$	$1.1 \times 10^8$ to $3.2 \times 10^8$
Stiffness in lbf/ft	$2.5 \times 10^4$ to $9.6 \times 10^4$	$4.2 \times 10^5$ to $4.5 \times 10^5$	$7.5 \times 10^6$ to $2.2 \times 10^7$
Material	Aluminum		Stainless Steel

# XFC205R Miniature Load Cell

## PERFORMANCE SPECIFICATIONS

All values are typical at temperature 20±1° C

PARAMETERS	
Operating Temperature Range (OTR)	-40 to 120° C [-40 to 248° F]
Compensated Temperature Range (CTR)	0 to 60° C [32 to 140° F]
Zero Shift in CTR	<2% F.S. / 50° C [/100° F]
Sensitivity Shift in CTR	<2% of reading / 50° C [/100° F]
Range (F.S.)	0-2 N to 0-200 N [0-0.4 lbf to 0-40 lbf]
Over-Range	
Without Damage	3 to 4 x F.S.
Without Destruction	5 to 6 x F.S.
Accuracy	
Linearity	≤±0.5% F.S.
Hysteresis	≤±0.5% F.S.

## Electrical Characteristics

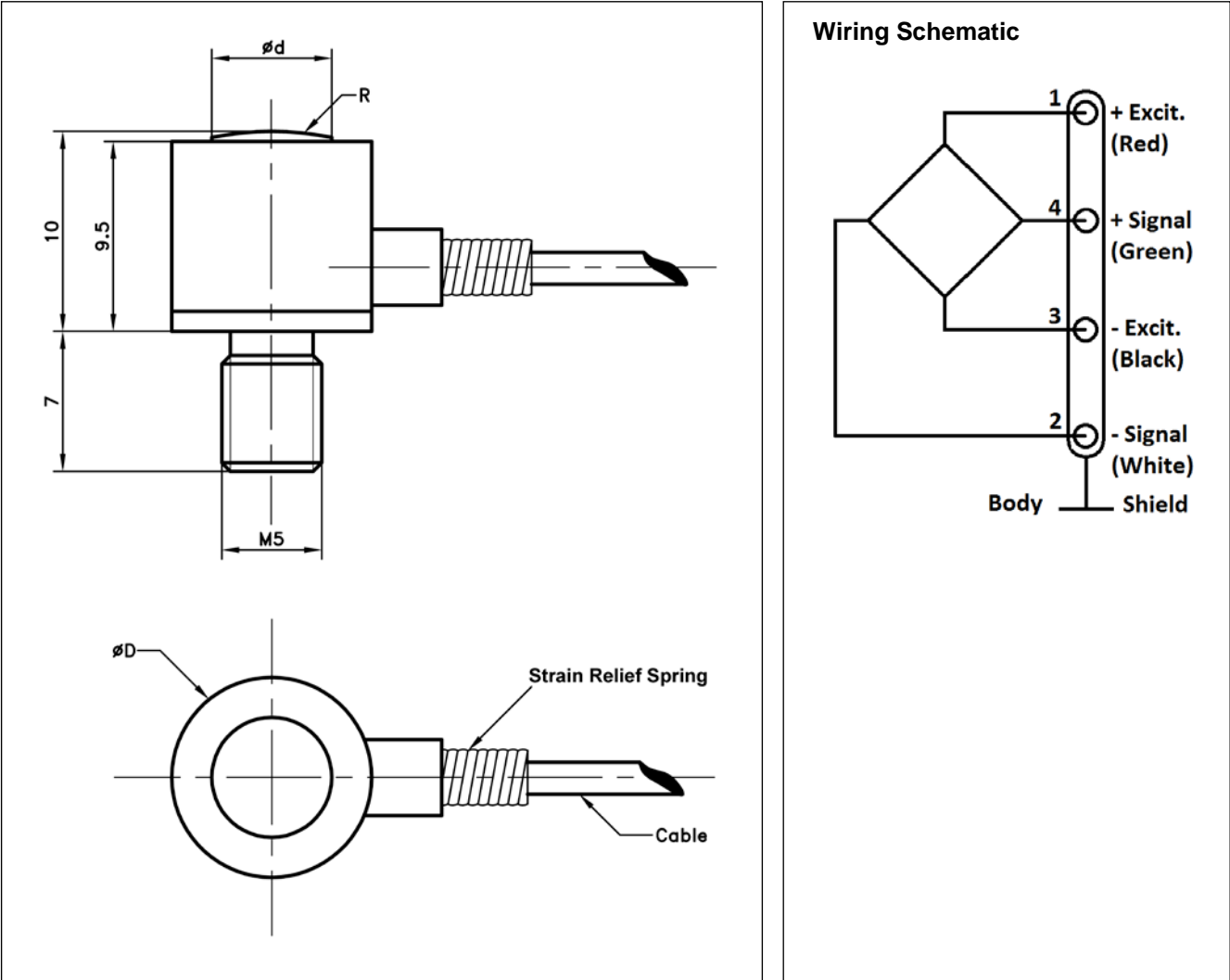
Model	XFC205R
Supply Voltage	10Vdc
F.S. Output	100 mV
Zero Offset	<±10 mV
Input Impedance/Consumption	1000 to 3000Ω
Output Impedance	500 to 1000Ω
Insulation under 50Vdc	≥100MΩ

## Notes

1. Electrical Termination: Cable: Shielded cable with 4 wires (AWG36), standard length 2 m [6.5 ft] with strain relief spring
2. Material: Body in stainless steel or aluminum alloy
3. Protection Index: IP50
4. CE conformance according to EN 61010-1, EN 50081-1, EN 50082-1

# XFC205R Miniature Load Cell

## DIMENSIONS & WIRING SCHEMATIC (IN METRIC AND IMPERIAL)



Dimensions in mm [inch]

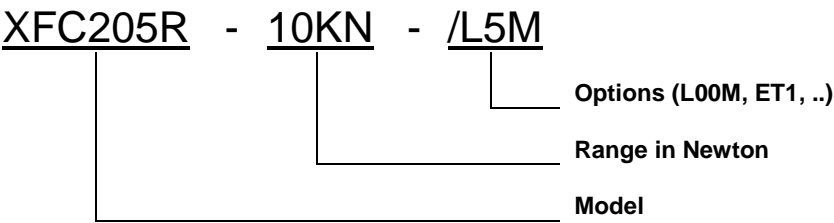
F.S. Ranges in N [in lbf]	2 - 5 [0.4 - 1]	10 - 20 - 50 [2 - 4 - 10]	100 - 200 [20 - 40]
Diameter D	10 [0.39]		
Diameter d	3 [0.12]	5 [0.20]	
Material	Aluminum	Aluminum	Stainless steel
Stiffness in lbf/ft	$2.5 \times 10^4$ to $9.6 \times 10^4$	$4.2 \times 10^5$ to $4.5 \times 10^6$	$7.5 \times 10^6$ to $2.2 \times 10^7$
Over-range w/o damage	x4	x4	x3
Over-range w/o destruction	x6	x6	x6

# XFC205R Miniature Load Cell

## OPTIONS

<b>ET1</b>	: CTR -20 to 100° C [-4 to 212° F]
<b>ET2</b>	: CTR -40 to 120° C [-40 to 248° F]
<b>ET3</b>	: CTR -40 to 150° C [-40 to 302° F] OTR=CTR
<b>HA</b>	: Accuracy (CNL&H) ≤ ±0.5% F.S.
<b>L00M</b>	: special cable length, replace "00" with total length in meters
* Order Flat Force application surface with reference <b>XFC205</b> .	

## ORDERING INFO



## 联系方式



深圳市亿为测控电子有限公司  
Shenzhen Bill-Well Measurement & Control Electronics Co., Ltd.

广东省深圳市南山区创业路怡海广场东座2407 邮编：518000  
电话：+86 755 2641 9890 传真：+86 755 2641 9680  
电子邮箱：sales@bill-well.com